



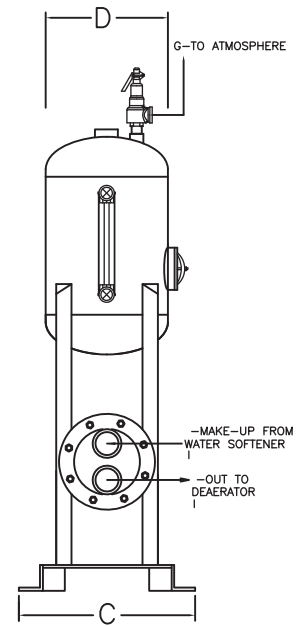
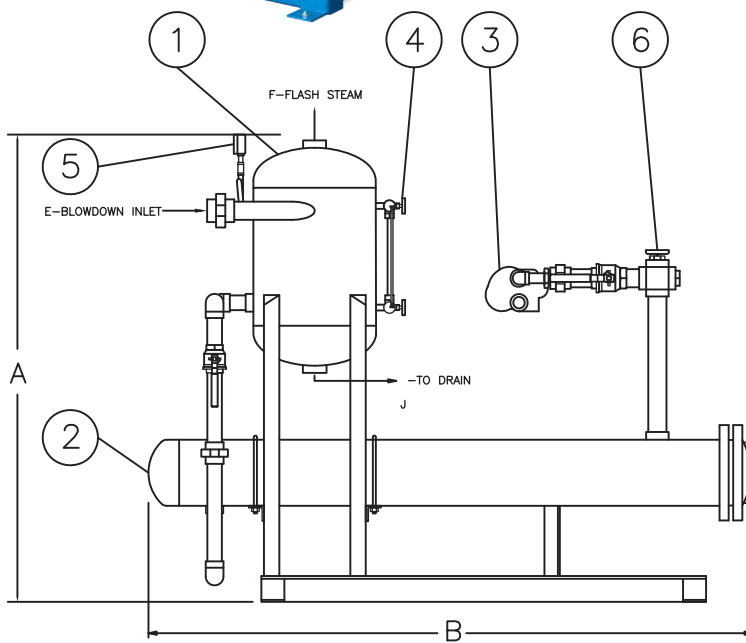
# CONTINUOUS BLOWDOWN HEAT RECOVERY SYSTEM

# WILSON



# ENGINEERING

A division of Industrial Steam



### STANDARD COMPONENTS

1. FLASH RECEIVER-50LB. ASME CODE AND STAMPED
2. HEAT EXCHANGER-SHELL AND TUBE TYPE\*
3. LEVEL CONTROL-F&T TRAP
4. SIGHT GLASS
5. PRESSURE GAUGE
6. TEMPERATURE GAUGE

### OPTIONAL ITEMS (FIGURE 1.1)

7. SAMPLE COOLER
8. SAMPLE VALVE(S)
9. LEVEL TRANSMITTER (NOT SHOWN)
10. PRESSURE RELIEF VALVE
11. LEVEL CONTROL VALVE
12. LEVEL CONTROLLER

SYSTEM MODEL NUMBER	MAKEUP CAPACITY in lbs./hr*	DIMENSIONS IN INCHES										Shipping Weight Approx. in lbs.
		A	B	C	D	E	F	G	H	I	J	
CBHR-5	5,000	54	55	18	16	2	1 1/2	1 1/4	1	1 1/4	1 1/2	639
CBHR-10	10,000	54	67	18	16	2	1 1/2	1 1/4	1	1 1/4	1 1/2	645
CBHR-25	25,000	54	66	18	16	2	1 1/2	1 1/4	1 1/2	1 1/2	1 1/2	689
CBHR-50	50,000	54	65	18	16	2	2	1 1/4	2	3	1 1/2	770
CBHR-100	100,000	60	78	24	24	3	3	1 1/2	2	4	1 1/2	808
CBHR-200	200,000	66	60	24	24	3	3	2	2	6	1 1/2	1795

\* ALL DIMENSIONS ARE BASED OFF COPPER TUBE HEAT EXCHANGERS. DIMENSIONS MAY VARY WITH THE USE OF STAINLESS STEEL SHELL AND TUBE HEAT EXCHANGERS.

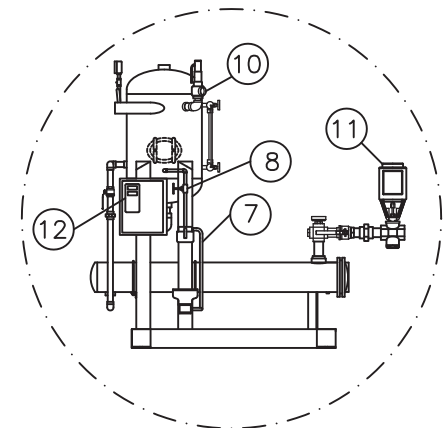


FIGURE 1.1  
CBHR SHOWN WITH OPTIONAL ELECTRONIC LEVEL CONTROL PACKAGE (STANDARD PACKAGE FOR THE CBHR-200)

Download the CBHR Specification Sheet at: [wilsonblowdown.com/specification](http://wilsonblowdown.com/specification)

1403 SW 7TH STREET, ATLANTIC, IOWA 50022 | TEL: 712-243-5300 | FAX: 712-243-3440 | [WILSONBLOWDOWN.COM](http://WILSONBLOWDOWN.COM)